

EMMONS

A large, dark silhouette of the word "EMMONS" is mounted on a horizontal beam. The sign is set against a bright, orange and yellow sunset sky that transitions into a clear blue sky above. Below the sign, a dark fence with vertical posts is visible, and the foreground is in deep shadow.

Climate-Smart Programs Lead



Jimmy Emmons

Senior Vice President, Climate-Smart Programs,
Trust In Food



America's Conservation Ag Movement 2022 Accomplishments

- 2nd consecutive ACAM agreement with NRCS
- 2023 \$1.5MM from NRCS and \$1.5MM private match
- Connected 58,000+ U.S. farmers representing at least 25+ million acres with state-specific climate-smart ag science, technical and financial resources
- At least 12,000 farmers accessing resources
- ACAM engaged in-person with 500+ farmers via 8 Conservation Stewards
- 500+ responses to measuring and evaluation survey in Arkansas, California, Indiana, Maryland and Nebraska
- 18 videos totaling 90+ minutes of producer success stories
- Producer resource guides with 280 downloads
- 250 voluntary requests for more information





Cattle Chats

TB TRUST IN BEEF™



TIB TRUST IN BEEF™



Vision

Beef producers are the central driving force building a more sustainable beef industry – for the planet, animals, people and profit.

Mission

TIB matches beef producers with information, tools and resources they need to advance their journey and share their progress.









SADETHA, IL
HYDRA BED

HYDRA BED

SPEED
LIMIT
35

Changing Our Soil

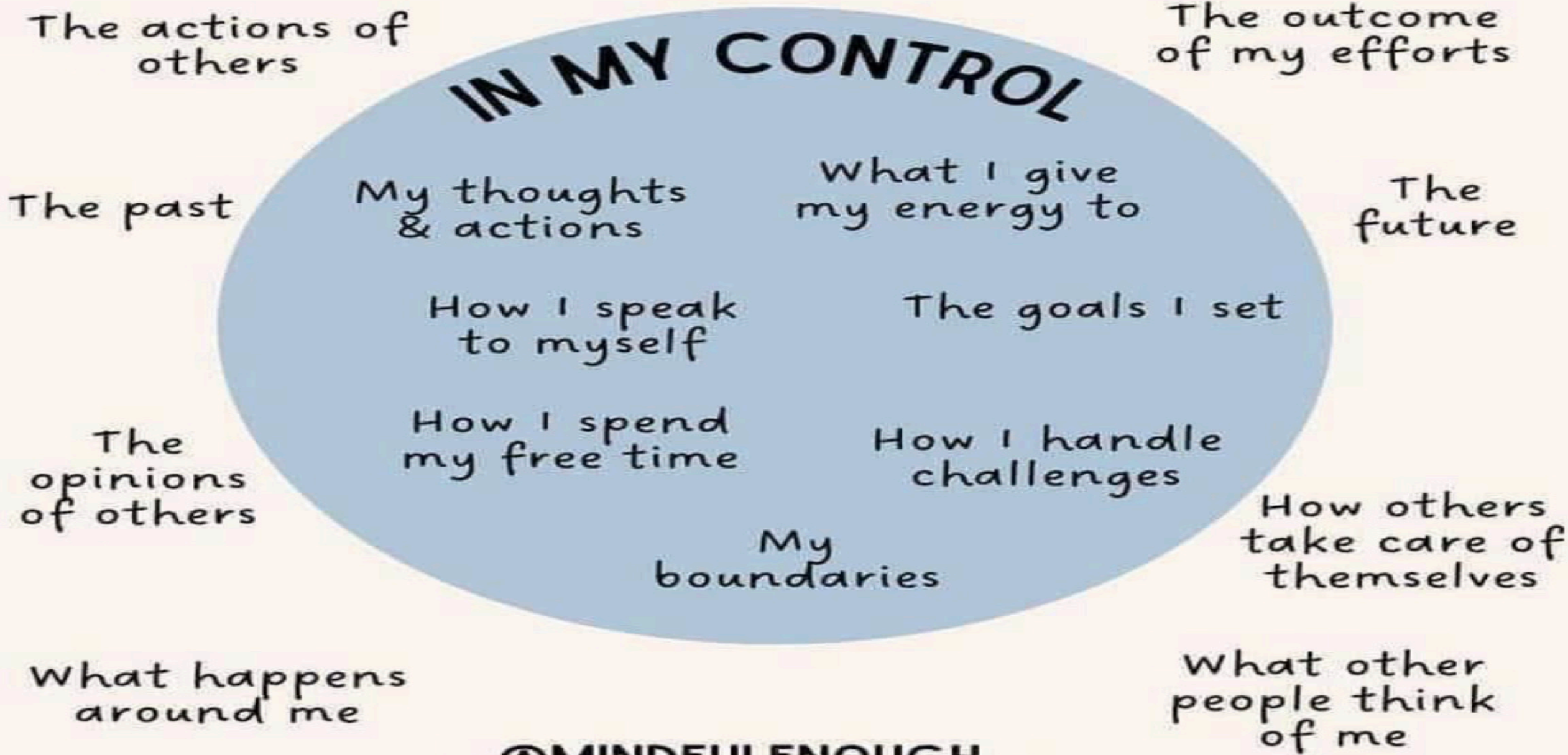
Changed Our Lives

The Old Way

The Better Way



OUT OF MY CONTROL



" WE CANNOT FORCE
SOMEONE TO HEAR A
MESSAGE THEY ARE NOT
READY TO RECEIVE,
BUT WE MUST NEVER
UNDERESTIMATE THE POWER
OF PLANTING A SEED. "



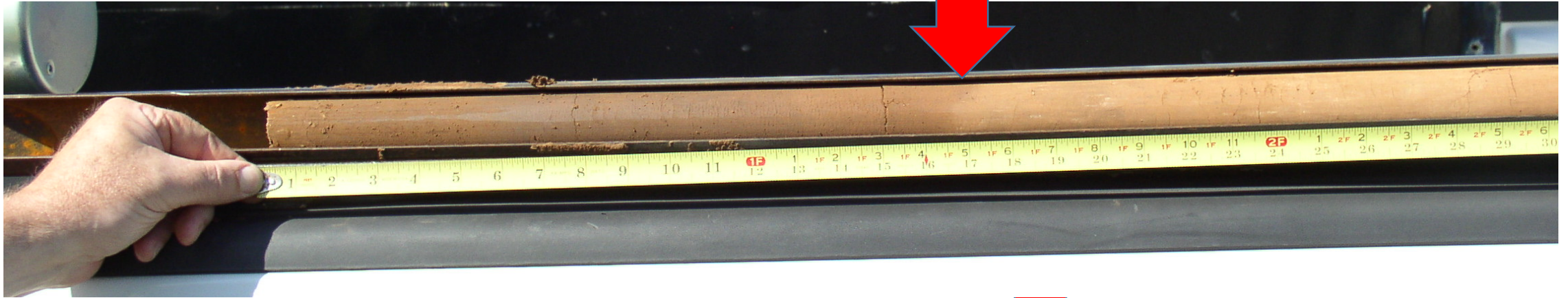






Soil moisture test No Cover vs Cover

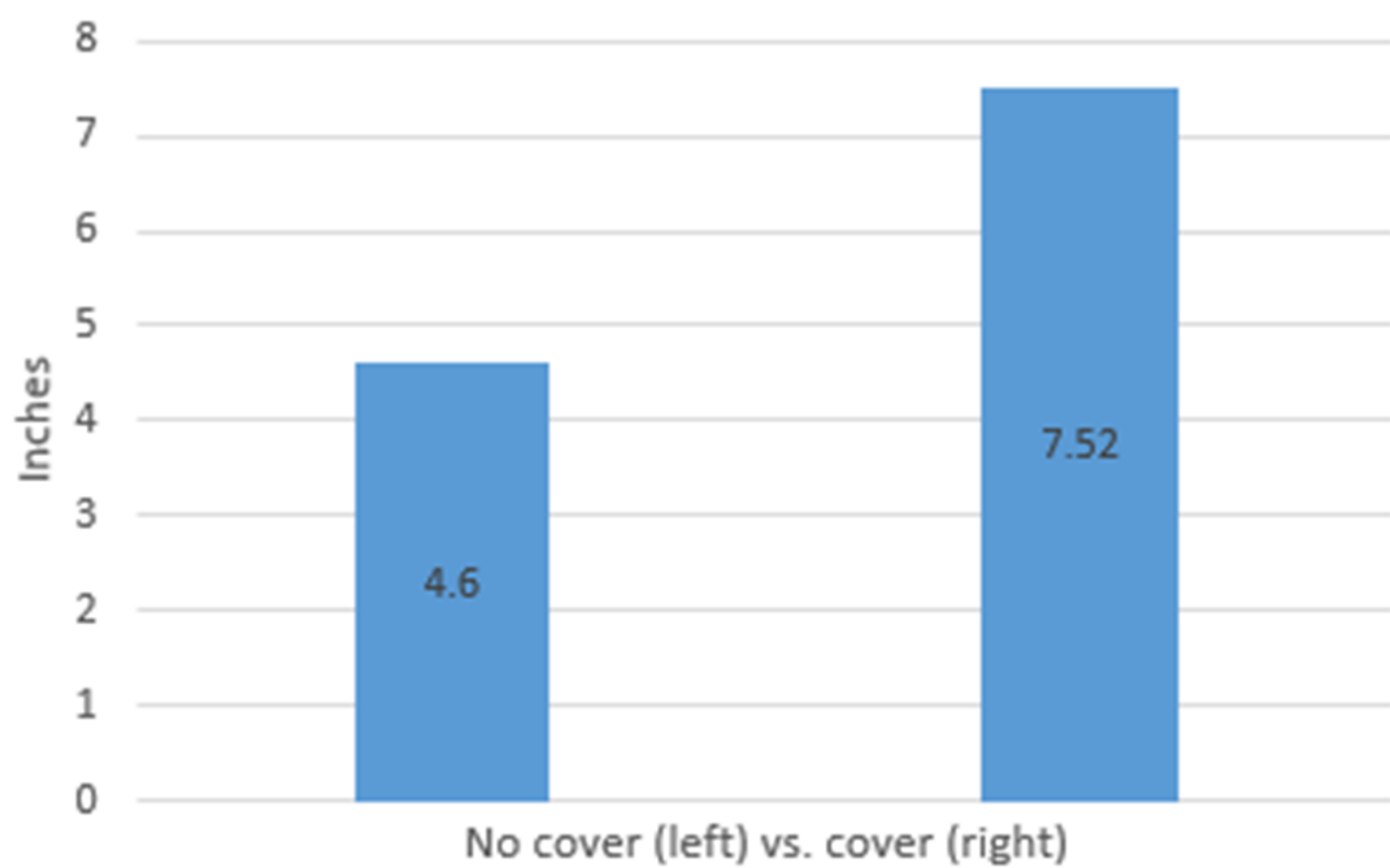
16 inches deep on bare soil



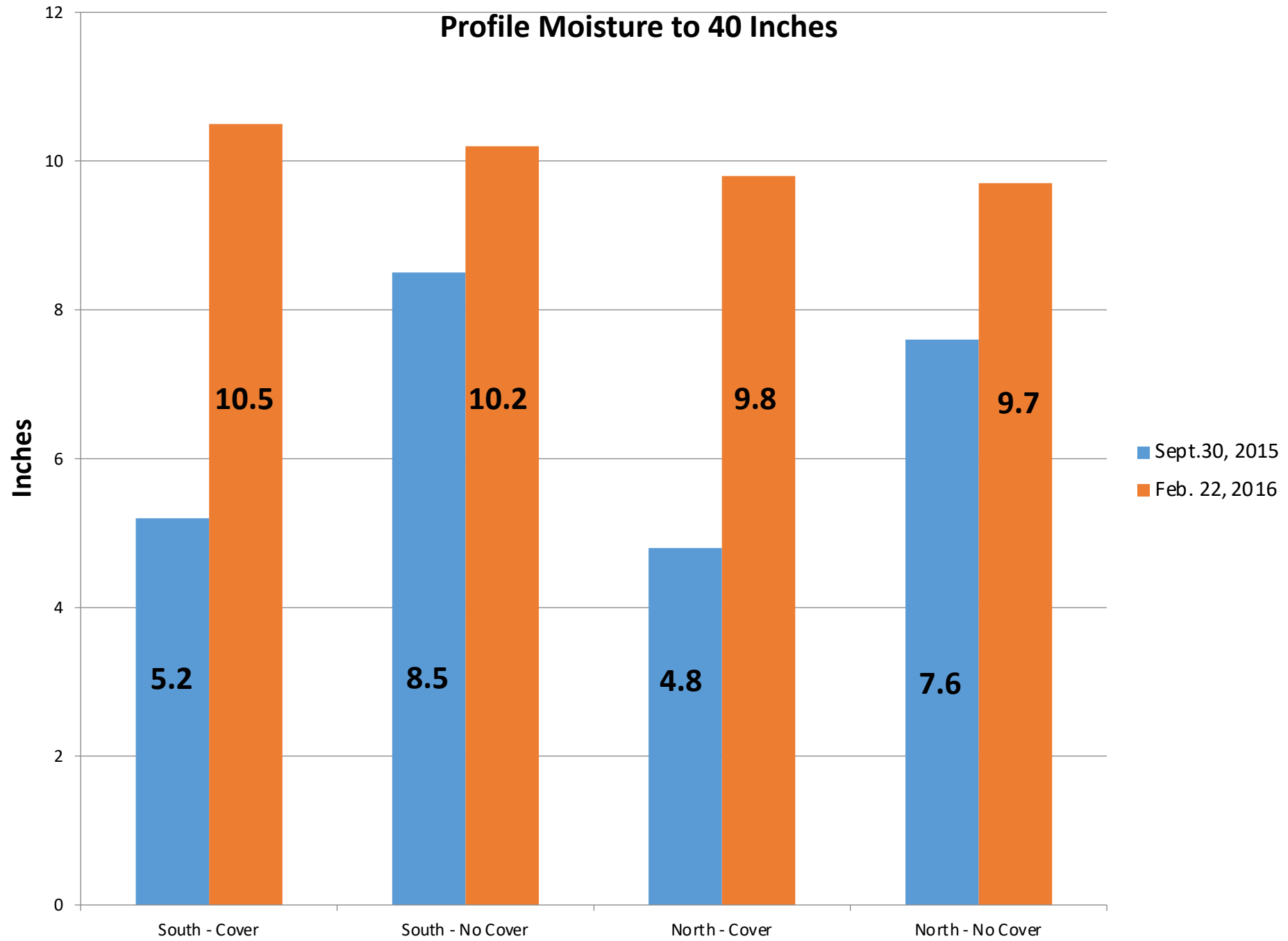
33 inches deep under cover crop



Profile moisture to 40 inches

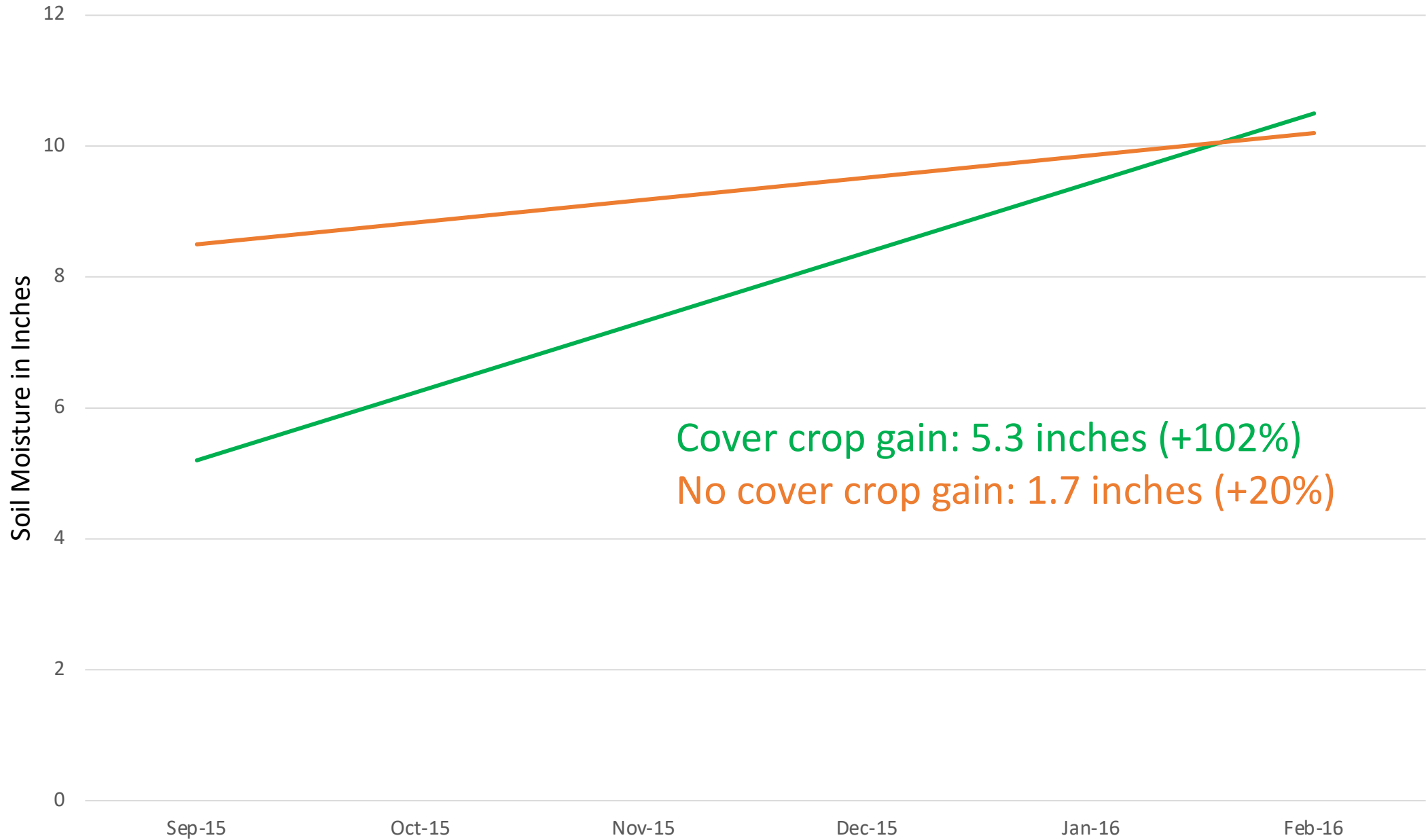


Profile Moisture to 40 Inches



Soil Moisture Depth – South Field

— With Cover Crop — Without Cover Crop























O. R. GREY, WOODWARD, OKLA.

No 5. Shot just as Tornado struck Leedey, May 31, 47



Looking northeast from Water Tank.

Nutrient Sequestration Cereal Rye

	N	P2O5	0-46-0	K2O	0-0-60	Sulfur	Mg	Ca	Biomass
12" rye	82	15	32	76	133	5	4	11	2000
18" rye	120	20	44	128	213	6	6	18	4000
28" rye	134	30	64	169	281	10	12	31	6800
Dead rye	84	29	64	39	65	3	11	29	3500

Note: Dead rye sample was taken 2 months after termination.

The Power of Cereal Rye

	N	\$ N	18-46-0	\$ P	0-0-60	\$ K	Total \$\$
12" rye	82	\$82.82	32	\$35.52	133	\$94.43	\$212.77
18" rye	120	\$121.20	44	\$48.84	213	\$151.23	\$321.27
28" rye	134	\$135.34	64	\$71.04	281	\$199.51	\$405.89
Dead rye	84	\$84.84	64	\$71.04	65	\$46.15	\$202.03

100 lbs of rye @ .29/lb = \$29/a

N = \$1.01/lb

P = \$1.11/lb

K = \$0.71/lb

May 1, 2022

The power of Balansa Fixation clover

	N	P2O5	K2O	Ca	Mg	S	B	Mn	Zn	Biomass
May 20, 2020	75	30	138	28	6	6	11	95	26	3,800
June 4, 2020	114	56	213	61	12	9	15	80	26	6,800
June 8, 2020	262	87	444	228	40	33	35	46	28	12,700
July 24, 2020	52	15	24	46	7	4	9	40	19	5,400

June 8th sample:

Organic carbon 5200 lbs/a
C:N 20:1

The Power of Legume Cocktails

	N	\$ N	18-46-0	\$ P	0-0-60	\$ K	Total \$\$
May 20	75	\$75.75	65	\$72.15	177	\$125.67	\$273.57
June 4	114	\$115.14	122	\$135.42	267	\$189.57	\$440.13
June 8	262	\$264.62	189	\$209.79	610	\$433.10	\$907.51
July 24	52	\$52.52	33	\$36.63	32	\$22.72	\$111.87

Cocktail cost = \$33/a

N = \$1.01/lb

P = \$1.11/lb

K = \$0.71/lb

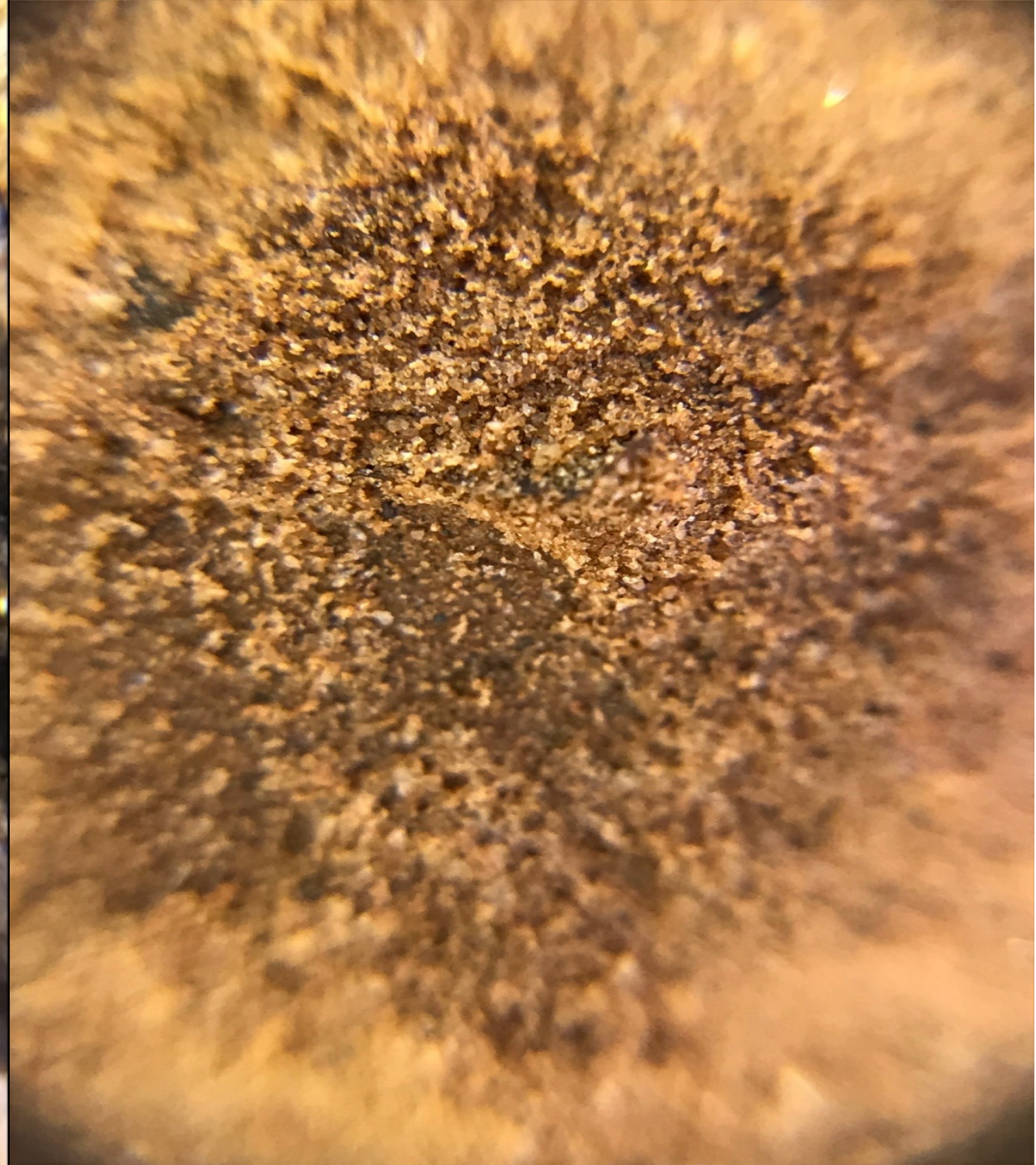
May 1, 2022





















EMMONS
1193
580-821-1921

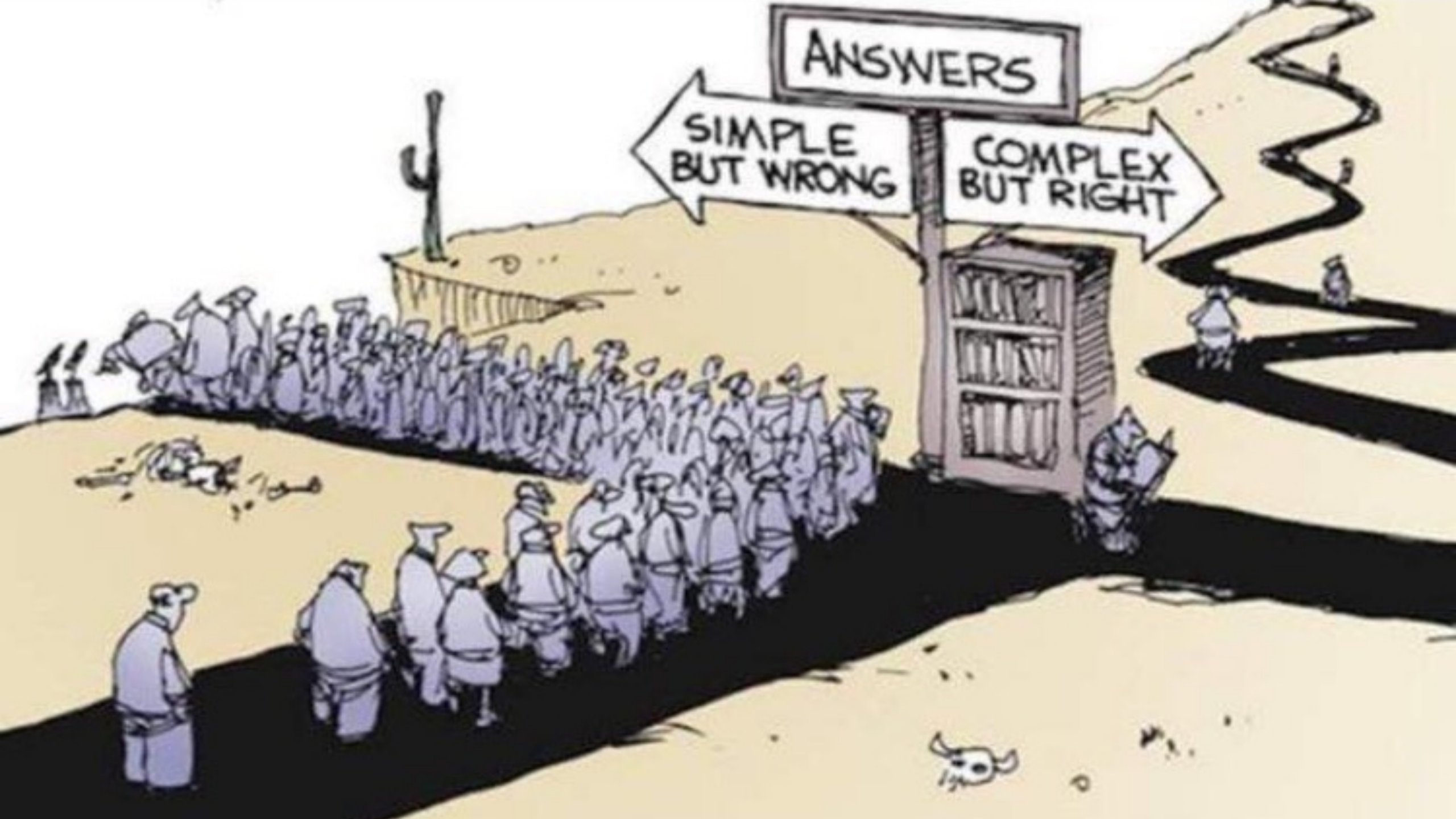
EMMONS
1275
580-821-1921











ANSWERS

SIMPLE
BUT WRONG

COMPLEX
BUT RIGHT



sustainability grows in healthy soil.

unlock the
SECRETS
IN THE **SOIL**

USDA  **NRCS**
United States Department of Agriculture
Natural Resources Conservation Service
www.nrcs.usda.gov

USDA is an equal opportunity provider and employer.



Healthy soil is the
sustainability:
money,
in
drought,
resources.
little as
in the
have
ers if t
CS' S
agement S,
rcs.usda












The original soil survey mapped this soil as Ustifluent these were a very young soil and typically didn't have a very dark surface and this field didn't have that 8 years ago. "Said Steve Alspach NRCS state soil scientist for Oklahoma" today I see a dark soil we call Mollic so we can now reclassify it as a fluventic haplustoll.




Re-Classifying My
Soil



There's more
to Pie than just
the crust!!!

- So how important is soil aggregation to soil health?
- It's everything beginning with improved infiltration, water holding capacity and carbon storage and more nutrients.
- If we get 8"-10" rainfall event and we can take it all in or at least most of it. That provides multiple benefits one is future water to grow crops with, more nutrients stay in the field instead of down stream. And our soil stays in place





5.3 inch Rainfall Event

Management:

- No-till Crop Rotation
- Cover Crops
- Planned Grazing Management

Infiltration Rate= 6 in/hr

143,906
gallons of water/Ac
Stored

Management:

- Conventional Tillage
- Small Grains
- No Cover Crops
- No Grazing

Infiltration Rate= 0.6 in/hr

16,507
gallons of water/Ac
Stored































18 Months in a field With Jimmy Emmons





JUST DO
NOTHING



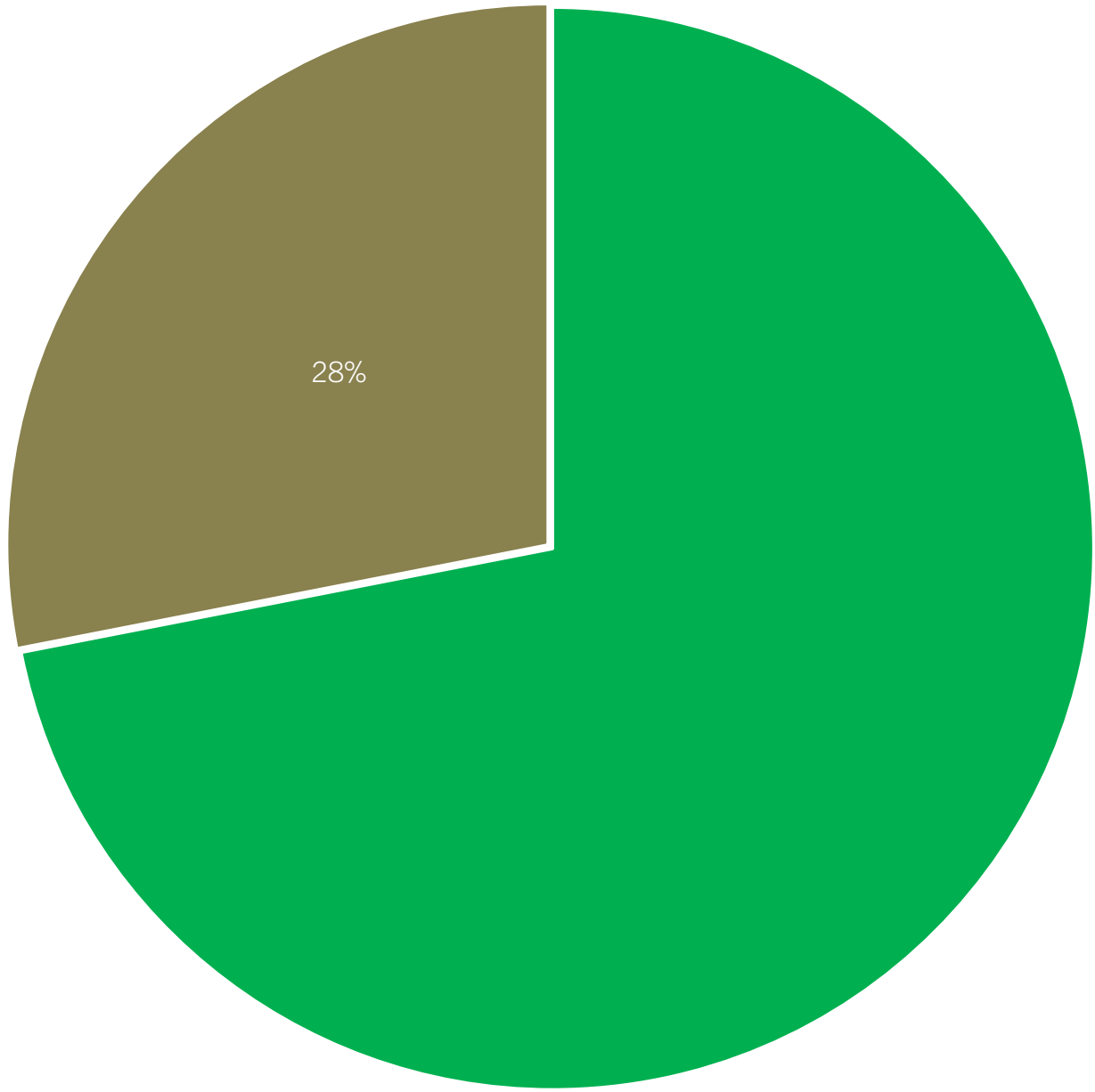
IT
IS IMPOSSIBLE



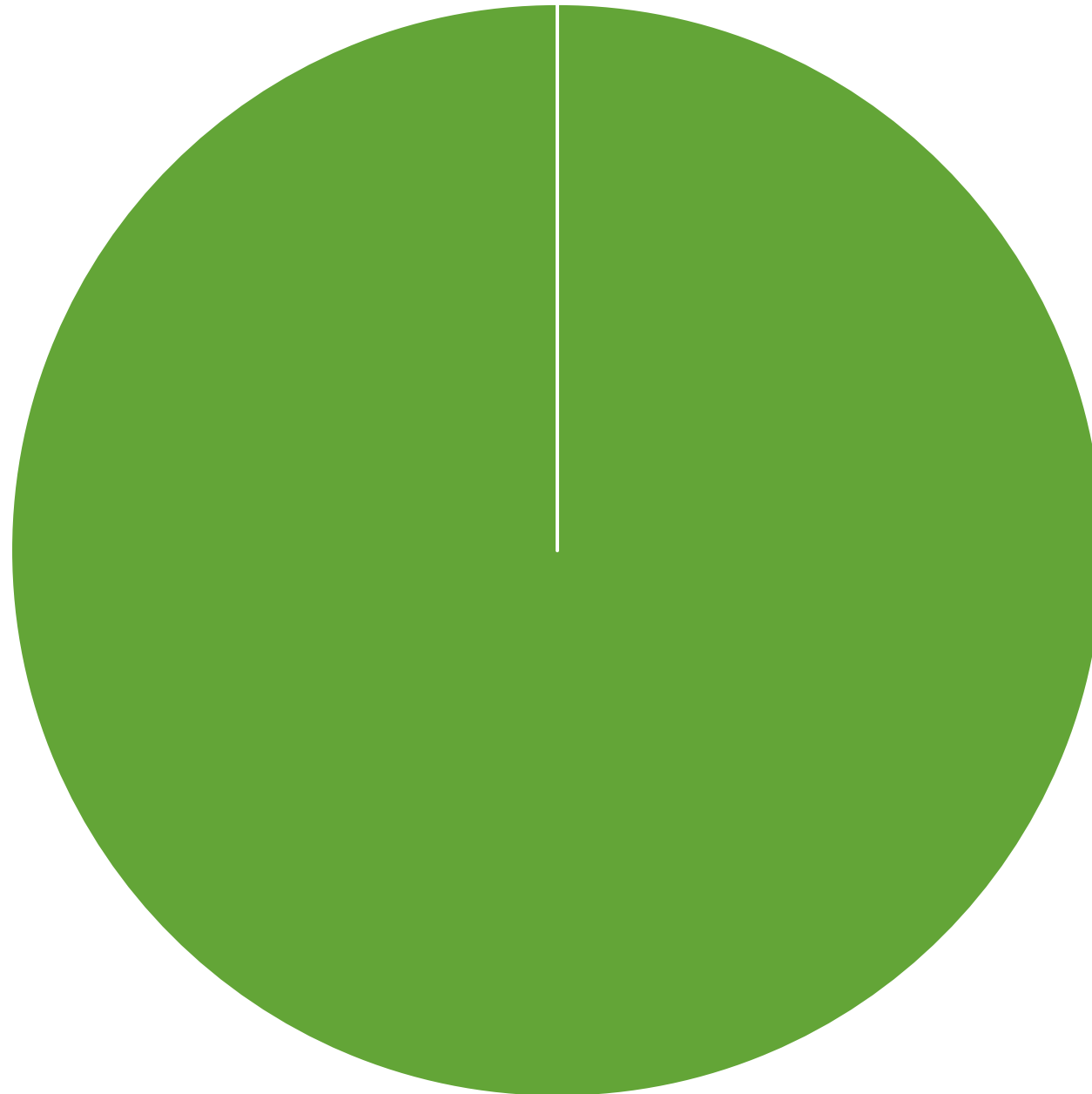
JUST DO IT

NOTHING IS IMPOSSIBLE





■ ■ ■ ■



■ ■ ■ ■

















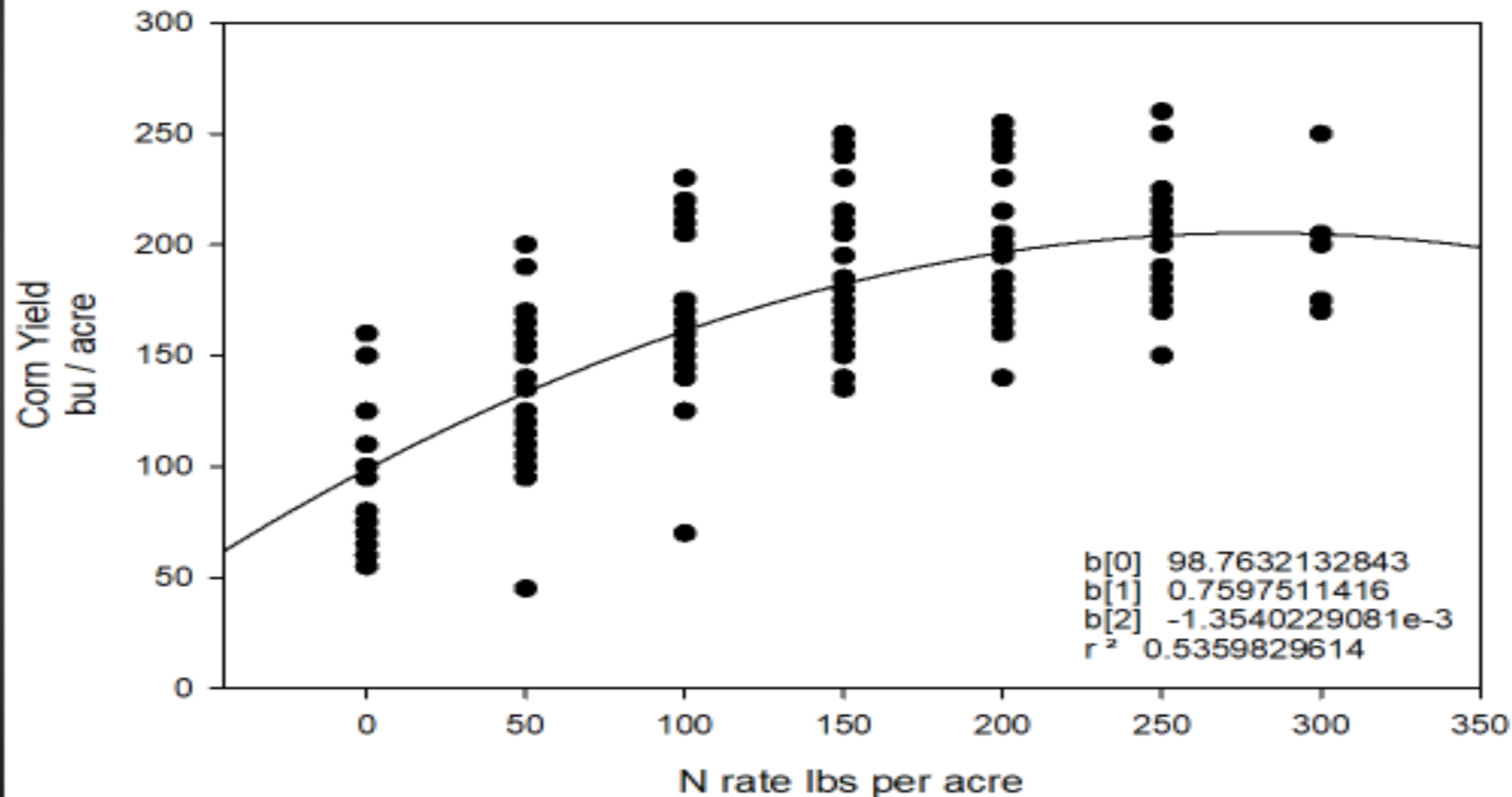




Data from Illinois Fertilizer and Chemical Association

Number of plots = 170

http://ifca.com/nrate_map/







COST	YEAR IN REVIEW	REVENUE
BIO STIMS	50.00	
RYE PLANTING	30.00	GRAZE RYE 432.00
CARE, FENCE	40.00	
HARVEST RYE	30.00	RYE @.10LB 196.00
PLANT CORN	60.00	CORN @5.00 550.00
HARVEST	75.00	GRAZE STALK 605.00
	285.00	1783.00

**Ships don't sink
because of the water around
them; ships sink because of the
water that gets in them. Don't
let what's happening around
you get inside you and weigh
you down.**



Long Live the Soil.
Our Lives Depend
On It!!!!!!!



JIMMY EMMONS

jemmons@farmjournal.com

FACEBOOK PAGES:

JIMMY EMMONS

OKLAHOMA SOIL HEALTH

TWITTER:

[@LongLiveTheSoil](https://twitter.com/LongLiveTheSoil)

YouTube video's

