



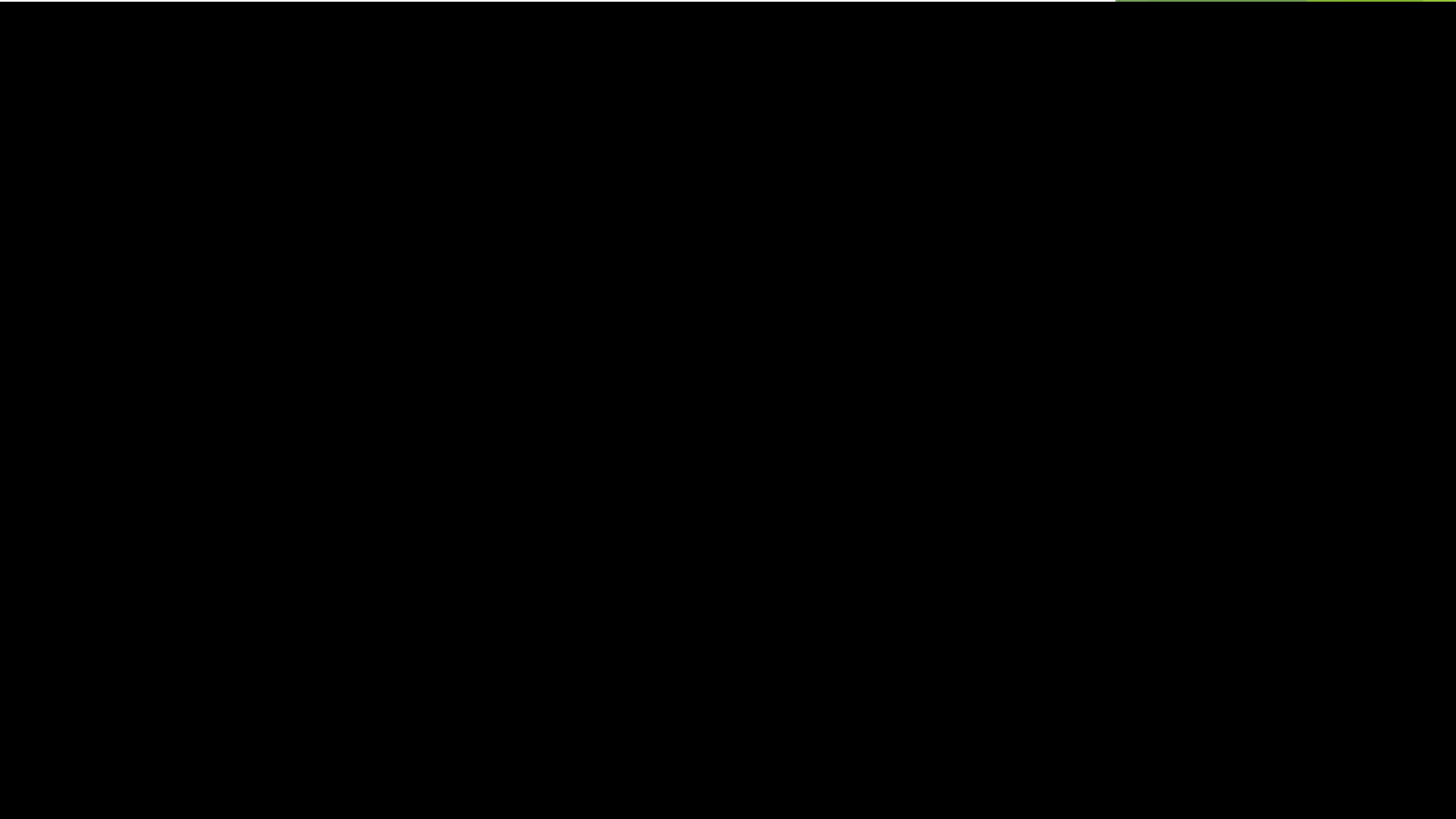
 **Greeneye**[™]
TECHNOLOGY

Spray Less, Grow More



Greeneye's mission is to dramatically reduce chemical usage in agriculture while increasing productivity and profitability for farmers.







Broadcast Spraying

Farmers spray their entire fields uniformly even though approximately 10% of their fields are infested with weeds



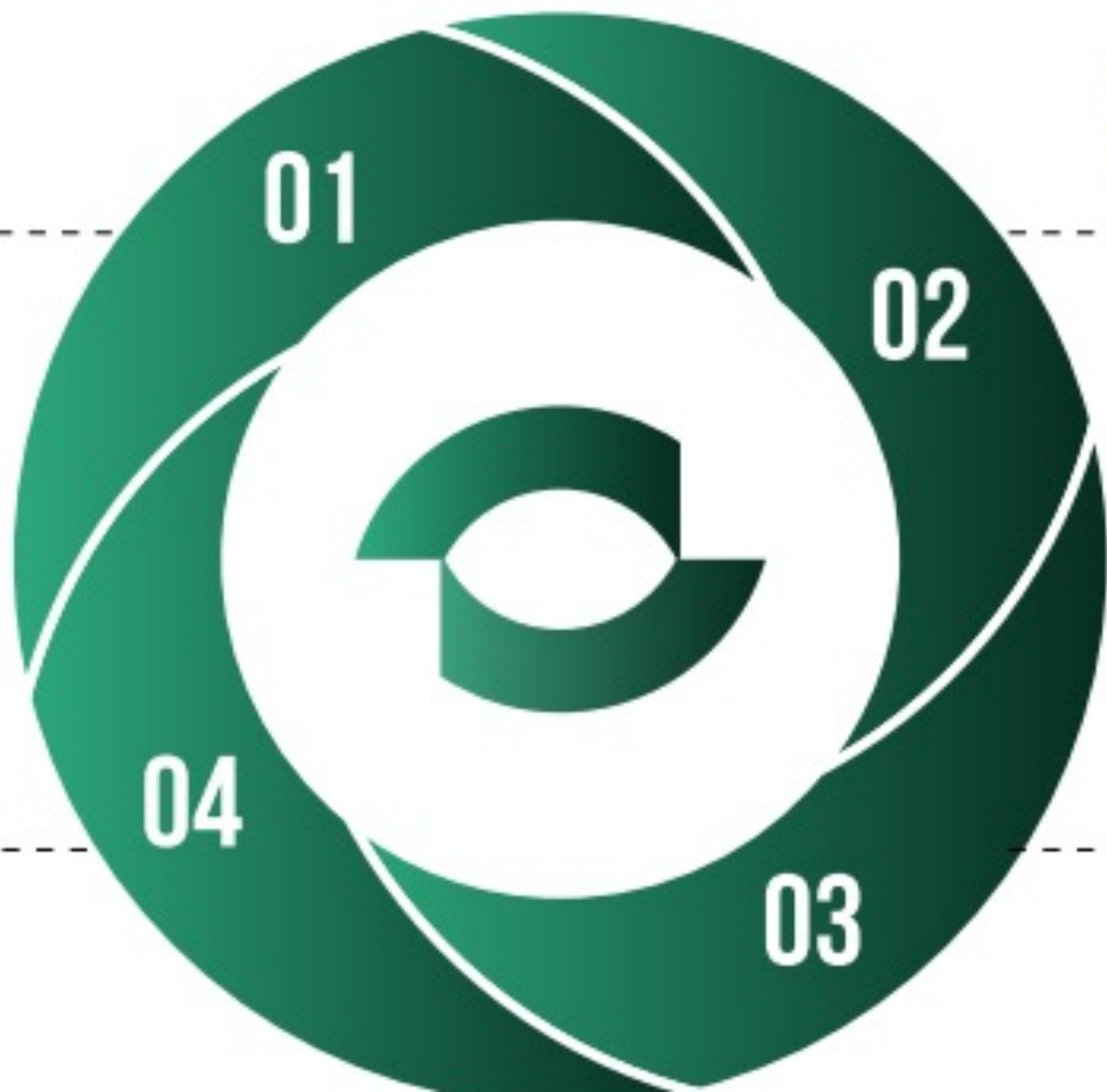
Precision Spraying

Greeneye's proprietary precision spraying system transition from wasteful and broadcast to precise spraying of herbicides

Precision Spraying Value Proposition

Reduce 70% - 90%
of non residual
herbicides cost

Improve Weed control
efficacy and increase
productivity



Cope with
rigorous regulations

Collect and analyze
high resolution data



Retrofit

With a retrofit-first approach, Greeneye system is the only commercial system in North America that is uniquely designed to integrate to any commercial sprayer with seamless integration, relevant for all spraying applications.

Dual-line

Retrofit your sprayer with our proprietary dual-line system to precisely spray weeds with non-residual herbicides from the precision line, while simultaneously broadcasting residual herbicides to ensure the ultimate weed control.





Cameras

24 High-resolution cameras are scanning more than 5,500 frames every second.

GPUs

It takes only 150 milliseconds from detecting the weed, classifying it down to the species level, triggering the right nozzle, and precisely spraying it. All done in real-time by 12 rugged graphic processing units.





PWM

Individually control 144 nozzles with our proprietary 100Hz PWM system. Providing the only plant-level spraying precision in the industry.



Artificial intelligence

Greeneye utilizes artificial intelligence, deep learning technology and a proprietary datasets of millions of labeled images to identify weeds in crop down to the species level with unparalleled accuracy.



Savings & Profitability

Reduce an average of 88% of non-residual herbicides by precisely spraying only the weeds.

With nozzle spacing of 10 inches we provide the industry most precise spraying resolution which ensures plant-level treatment and the highest savings on crop inputs.

Reduce crop damage

By spraying just the weeds in the field with our unique plant-level precision, you can almost entirely eliminate the unnecessary spraying of your crop, reducing crop damage and improving your productivity.

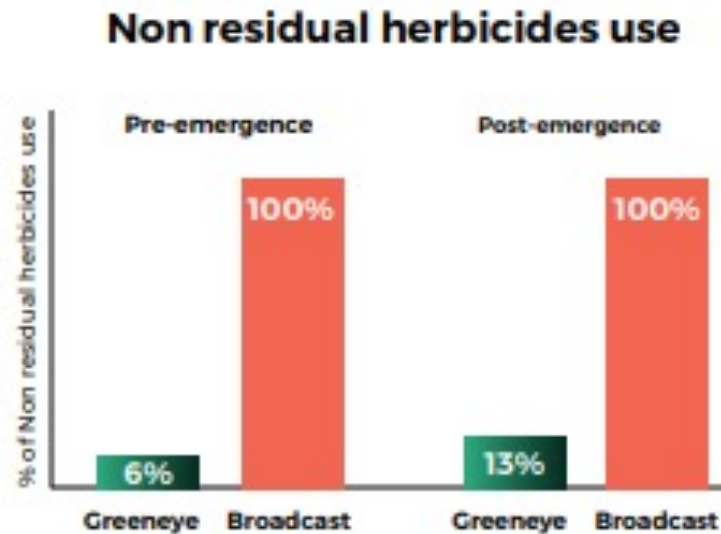
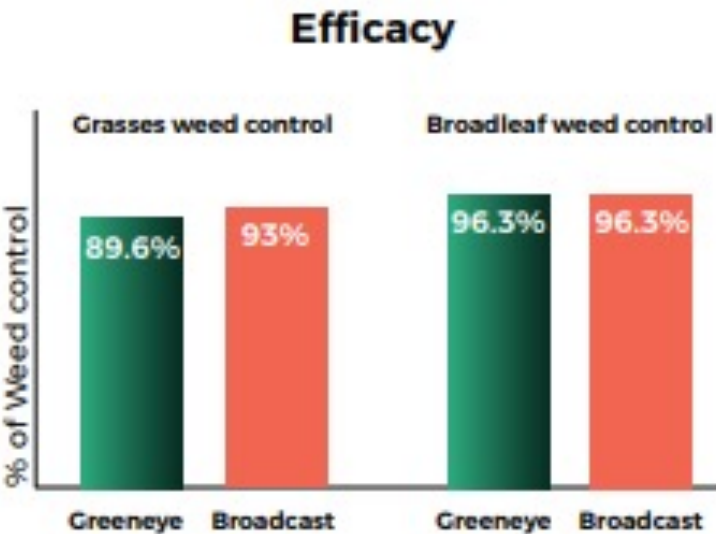


Efficacy Field trial

Greeneye precision spraying system vs. Broadcast spraying

Conclusions:

- Spraying with Greeneye dual-tank reduced **94%** of the non-residual herbicides on pre-emergence.
- Spraying with Greeneye dual-tank reduced **87%** of the non-residual herbicides on post-emergence.
- Weed control on broadleaf was identical (**96.3%**) between broadcast treatment to Greeneye.
- Weed control on grass was slightly better with broadcast treatment with **93%** compared to Greeneye **89.6%**.
- With broadcast treatment the cost of the program is **\$105.8/acre** compared to Greeneye cost of **\$40.6/acre**. Greeneye is cheaper by **\$65.1/acre**.



Greeneye plot 21 days after post emergence spraying



Untreated plot 21 days after post emergence spraying



Broadcast plot 21 days after post emergence spraying
(Crop damage caused by dicamba was observed)

* Avg. of 3 repetitions

** Control rate was observed 21 days after post emergence spraying

*** The trial was conducted by the University of Nebraska supervised by Prof. Amit J. Jhala



HAGIE-O2



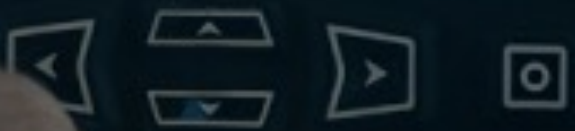
Full
Low
594

Volume Sprayed
0 Gal
Pressure
0 PSI

Greeneye™
TECHNOLOGY

L BOOM ON
L BOOM OFF

PUMP OFF
START FIELD
R BOOM ON
R BOOM OFF



ROI Analysis

Business model that suits every customer

Key Figures

Crop	Corn
Farm Size	4,000 acres
Herbicide costs per acre	\$55.5 / acre
Greeneye's savings per acre	\$28.2 / acre
Total herbicides cost	\$222,000
Total savings	\$112,800

Model 1 - Capital Equipment

Upfront cost	\$195,000
Annual savings	\$112,800
Annual subscription	-
ROI (years)	1.7
Total cost - 5 years	\$195,000
Net savings - 5 years	\$369,000
Total cost - 10 years	\$195,000
Net savings - 10 years	\$933,000

Model 2 - Annual Subscription

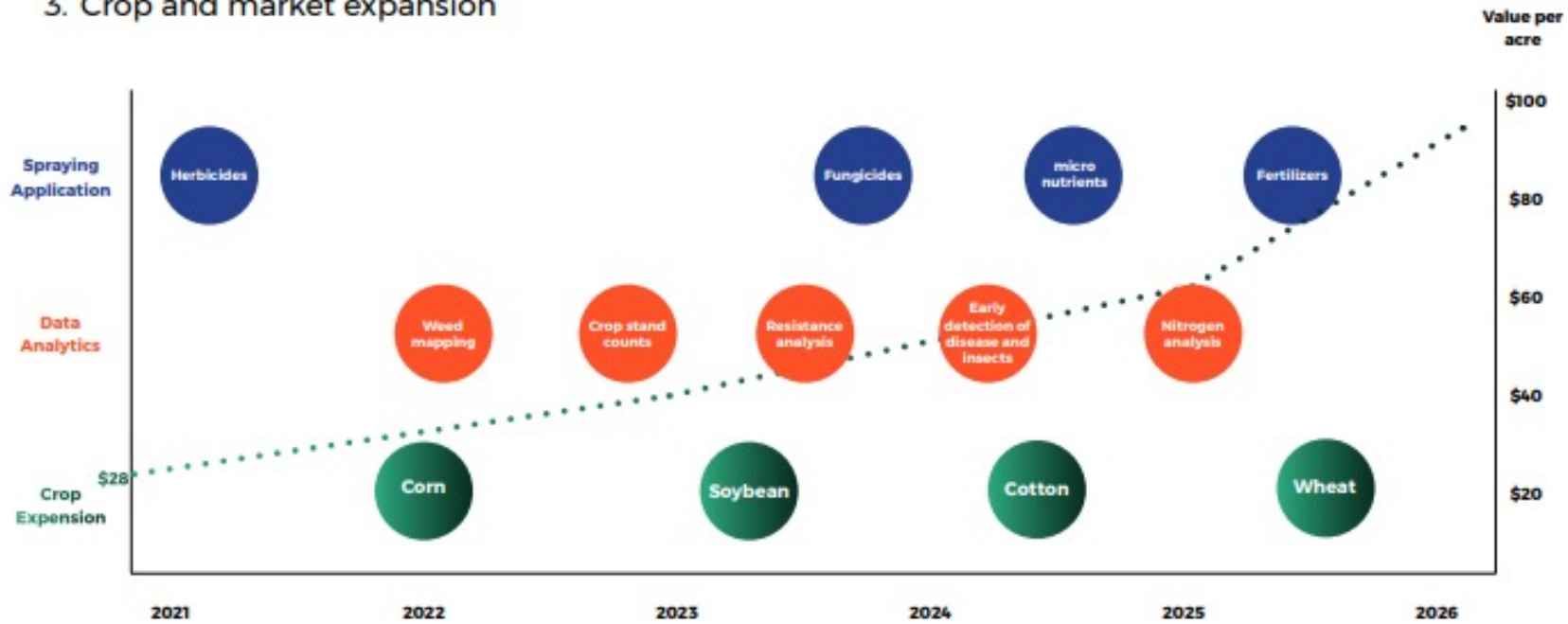
Installation fee	\$20,000
Annual savings	\$112,800
Annual subscription	\$56,000
ROI (years)	0.7
Total cost - 5 years	\$300,000
Net savings - 5 years	\$264,000
Total cost - 10 years	\$580,000
Net savings - 10 years	\$548,000



The Bigger Mission - Treating the field at the plant level

Precision spraying of herbicides is only the first step. Value Proposition Expansion:

1. Precision spraying of additional chemical applications
2. Collecting & analyzing data from the field
3. Crop and market expansion



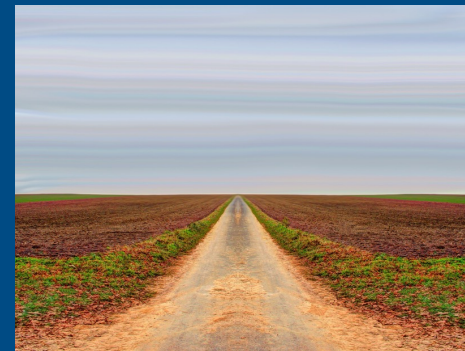
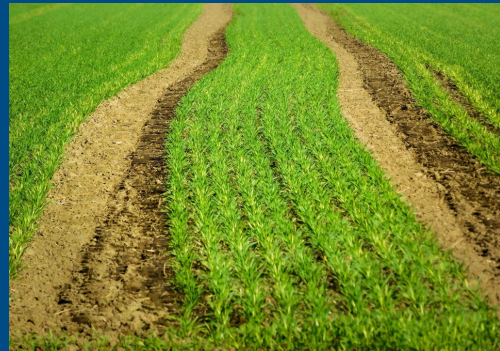
Greeneye Advantages

- ▶ **Save an Average of 88% on contact herbicides**
- ▶ **NO FEES**
- ▶ **Capable of Spraying 24 hours a day**
- ▶ **Less fills**
- ▶ **Reduced drift**
- ▶ **Increased Yields**



Central Tire Inflation Systems

www.ptg.info



CTIS – Have you ever heard of it ?



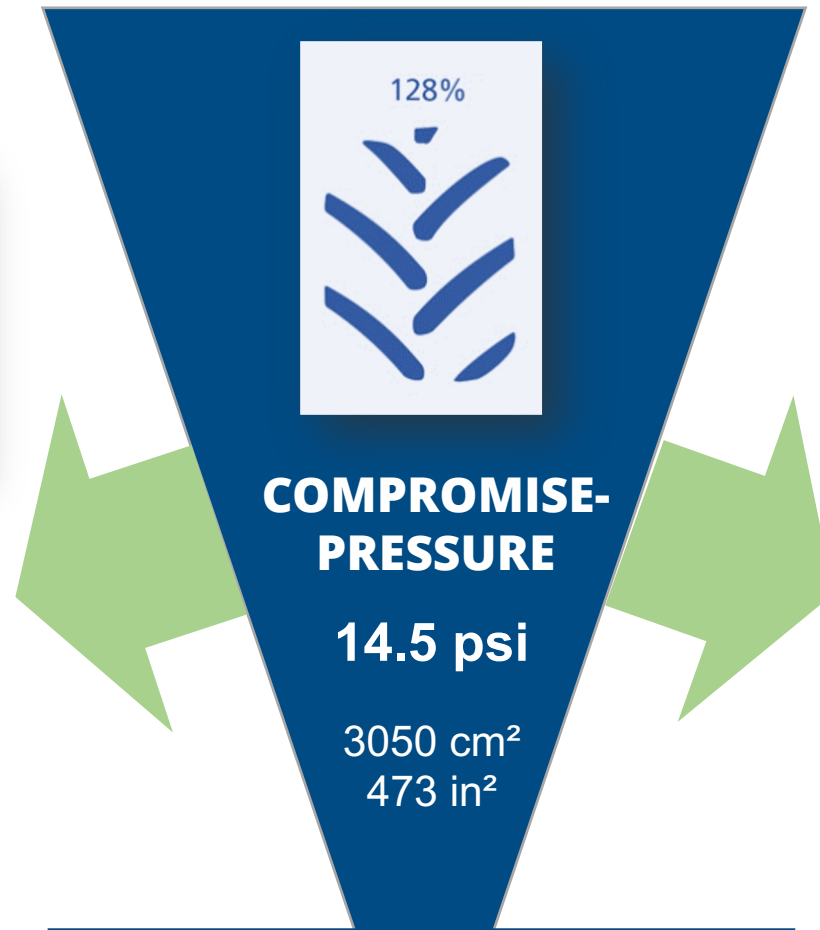
Why Adapt Tire Pressure?



23 psi
2390 cm² / 370 in²

ROAD-PRESSURE

- Reduced fuel consumption (10% and more)
- Less tire wear (up to 20%)
- Less tire damage
- High load capacity at high speeds
- High driving stability / safety on the road



7.3 psi
4190 cm² / 650 in²

FIELD-PRESSURE

- Reduced ground pressure / compaction
 - Reduced lane depth
 - Reduced rolling resistance
- Significant increase in traction
 - Increased yields

INCREASE PRODUCTIVITY	REDUCE COSTS	PROTECT SOIL

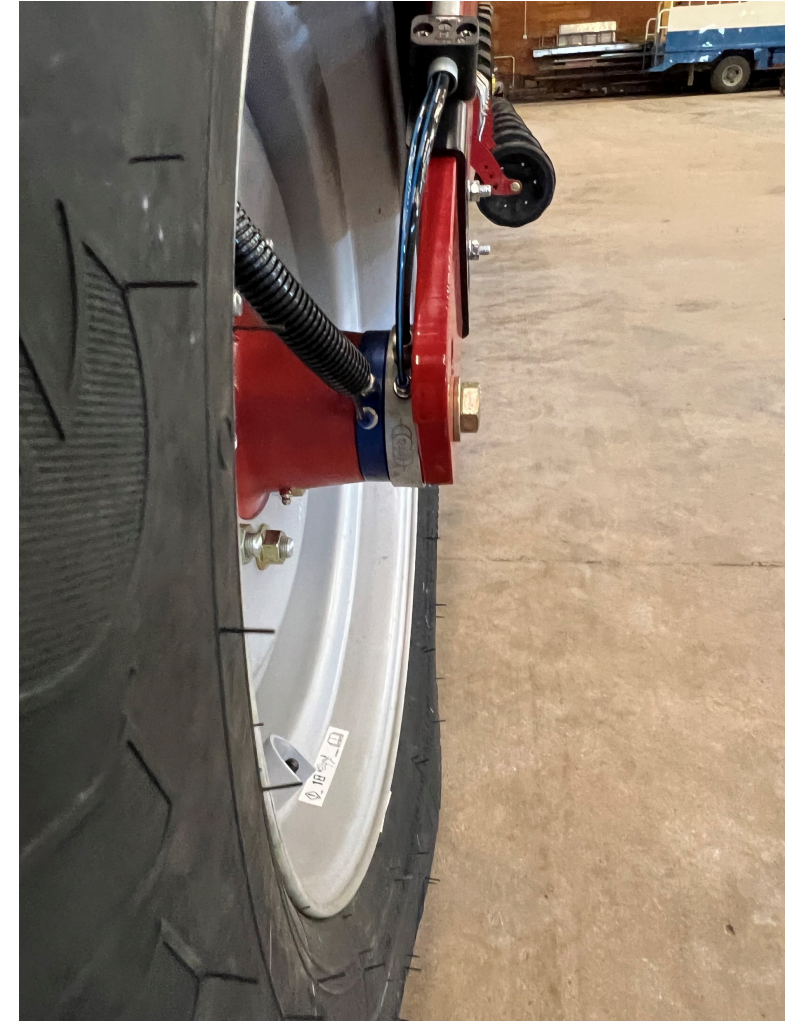
Ideal Applications



Planter-systems – John Deere Solutions



Planter-systems – Case IH Solutions



CTIS and Planter – Visual Comparison in Field



Standard Pressure
Tractor Rears – 35 PSI
Planter Mains – 70 PSI

CTIS Enabled Field Pressure
Tractor Rears – 9 PSI
Planter Mains – 24 PSI



CTIS and Planter – Visual Comparison in Field



Standard Pressure
Tractor Rears – 30 PSI / 2.1 bar
Planter Mains – 61 PSI / 4.2 bar



CTIS Enabled Field Pressure
Tractor Rears – 14 PSI / 1.0 bar
Planter Mains – 23 PSI / 1.6 bar



CTIS and Planter – Water Infiltration



Standard Pressure
Tractor Rears – 30 PSI / 2.1 bar
Planter Mains – 61 PSI / 4.2 bar



CTIS Enabled Field Pressure
Tractor Rears – 14 PSI / 1.0 bar
Planter Mains – 23 PSI / 1.6 bar



Adjusted Tire Pressure - physics



HARVESTERS & FLOATERS

CEREXBIB® 2

Tire specifications and pressure table. Load per tire in lbs.*

Rim Size (Inch)		Description										MSPN (CAI)			
30		VF 520/85 R30 CFO+ 172A8 TL										86907 (188276)			
Section Width	Overall Diam. (In.)	Loaded Radius (In.)	Rolling Circum. (In.)	Recommended Rim	Acceptable Rims						Min. Dual / Triple Spacing (In.)	75% internal volume (gal.)	Tread depth (32nd in.)		
20.6	63.9	27.9	188.9	W16L							26.9	114.9	58		
Psi	17	20	23	25	26	28	29	30	32	33	35	36	38	39	41
6 mph Cyc	12930	14430	15930	16225	16525	16810	17110	17405	17690	17990	18275	18815	19355	19885	20425
10 mph Cyc	11795	13160	14530	14795	15060	15320	15585	15850	16125	16390	16655	17150	17650	18135	18630
25 mph	8820	9790	10750	11000	11265	11520	11775	12025	12280	12535	12785	13060	13340	13615	13890

*IMPORTANT:

The inflation pressure must always be appropriate for the load per tire, the speed of travel and the work to be done. Our recommendations above are provided subject to changes made after the date of publication of these tables. Technical data is subject to change without prior notice.

- When using single tire configuration:
 - add 6 psi for use on slopes of more than 20%
 - add 6 psi for intense road use exceeding 50%

- 10 mph Cyc: Harvesting work with cyclic loads at 10 mph.
- CFO+: Cyclic Field Operation generating a bonus for cyclic loads in the field at 6 mph (1 mile maximum distance fully loaded).
- NRO (Narrow Rim Option): Add 3 psi to the calculated pressure to make up for the loss in volume of the narrower rim.



The PTG CTI-System



Additional Compressor

- Fast inflation time
- Fully automated



Foldable front line

- For long road transit or narrow places
- Front line can be folded on mudguard
- Avoid any extra width on the machine



Electronic Reg. Valve

- Mechanical and Electronic Safety Features
- Incredibly precise pressure control



Digital or ISOBUS control



Internal rotary union

- No external line on rear axle
- Maintenance free,
- Last more than 10.000 tractor hours



Automatic tire valve

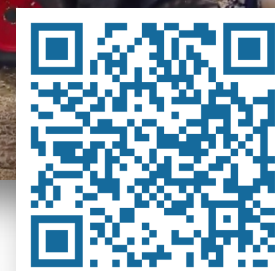
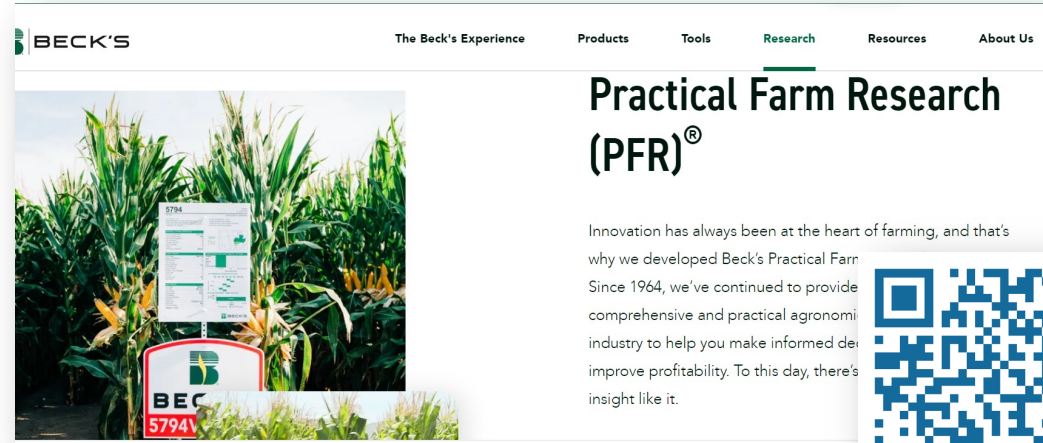
- Only open during inflation/deflation
- Safe use: no deflation due to leaks
- Fast air flow for fast deflation

PTG Solutions for OEs



approved by JD







**INCREASE
PRODUCTIVITY**



**REDUCE
COSTS**



**PROTECT
SOIL**

Sean Higgins

PTG Business Development Manager NA
Michelin North America

cell: (724) 584-7361
sean.higgins@michelin.com

Thank you !





GREENFIELD

CHEM FREE 





GREENFIELD
CHEM FREE



Co-Sponsored by No-Till Farmer and These Leading No-Till Suppliers:

