





# CORN & SOYBEANS





# GENETIC POTENTIAL





# FENCE ROW FARMING





# TWO FURROW PLOUGH





# THREE FURROWS





# THE SOIL LOOKED LIKE SUGAR CUBES





# ON THE BERRY FARM





A FENCE ROW EVERY 30"





# FIRST YEAR





# IT STARTED GETTING BETTER





2011





2012



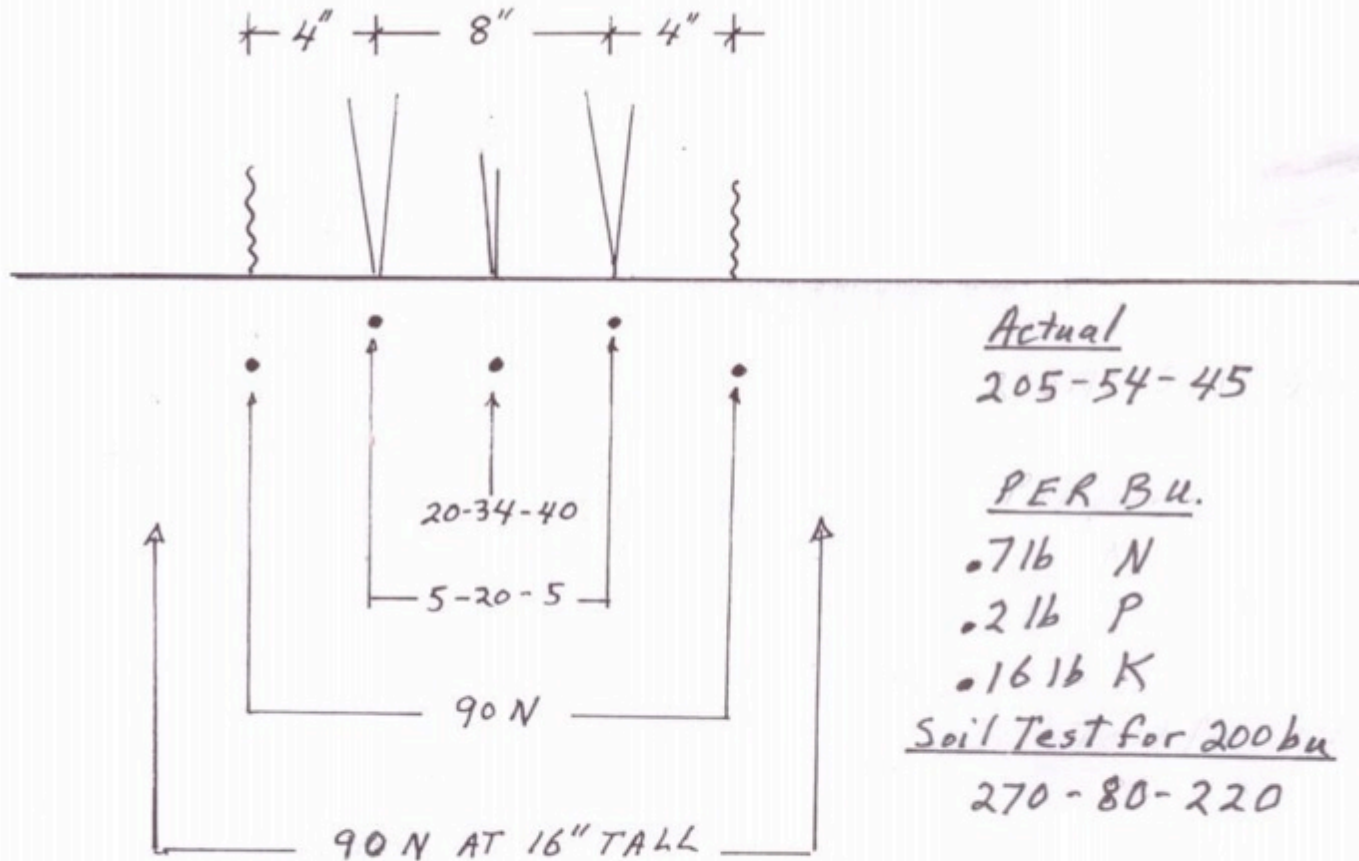


# INCREDIBLE GROWTH





# 8" TWIN ROWS - 36,000 / ACRE





# PLANTER





# PUMPS, HOSES AND EXTENDED FRAME





# 4" OFFSET





# 6 ROW SPLITTER OFFSET 8"





# 28% COULTERS





# TRASH WHIPPERS





# FERTILIZER COULTERS





# SEED FIRMERS





# CLOSING WHEELS





BIRD SCARING

CROP SCOUTING





# NOT TILED



# STILL CULTIVATING





THE SECRET : GET OUT OF THEIR WAY





# ROOT GROWTH





# GEORGE'S TEST PLOTS



FENCE ROW FARMING



CONVENTIONAL



# A VERY SLOW START



FENCE ROW FARMING



CONVENTIONAL



# GEORGE THOUGHT HE WAS WASTING HIS TIME



FENCE ROW FARMING  
249 BU/ACRE



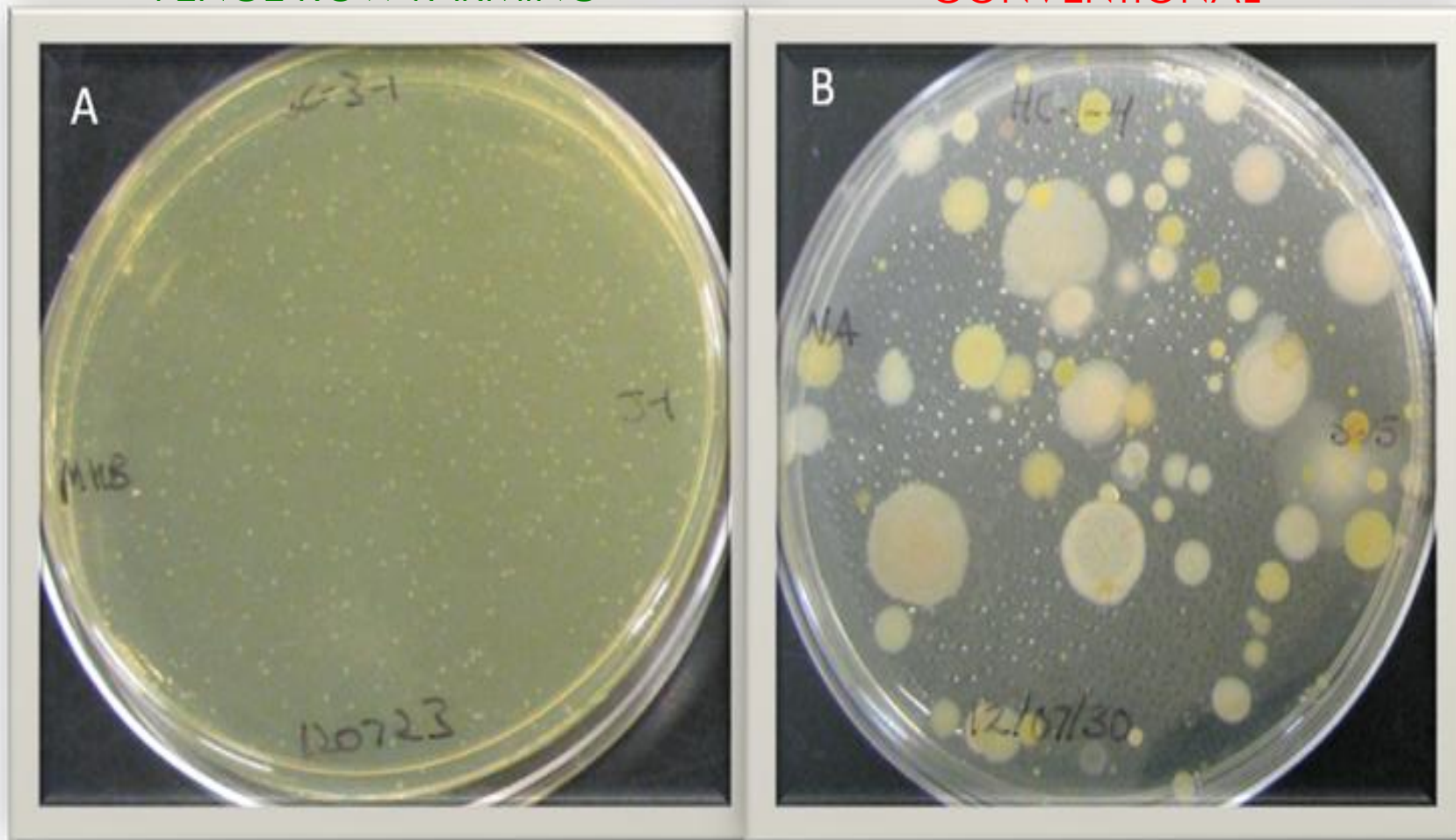
CONVENTIONAL  
162 BU/ACRE



# BACTERIA COLONIES FROM STEM JUICE

FENCE ROW FARMING

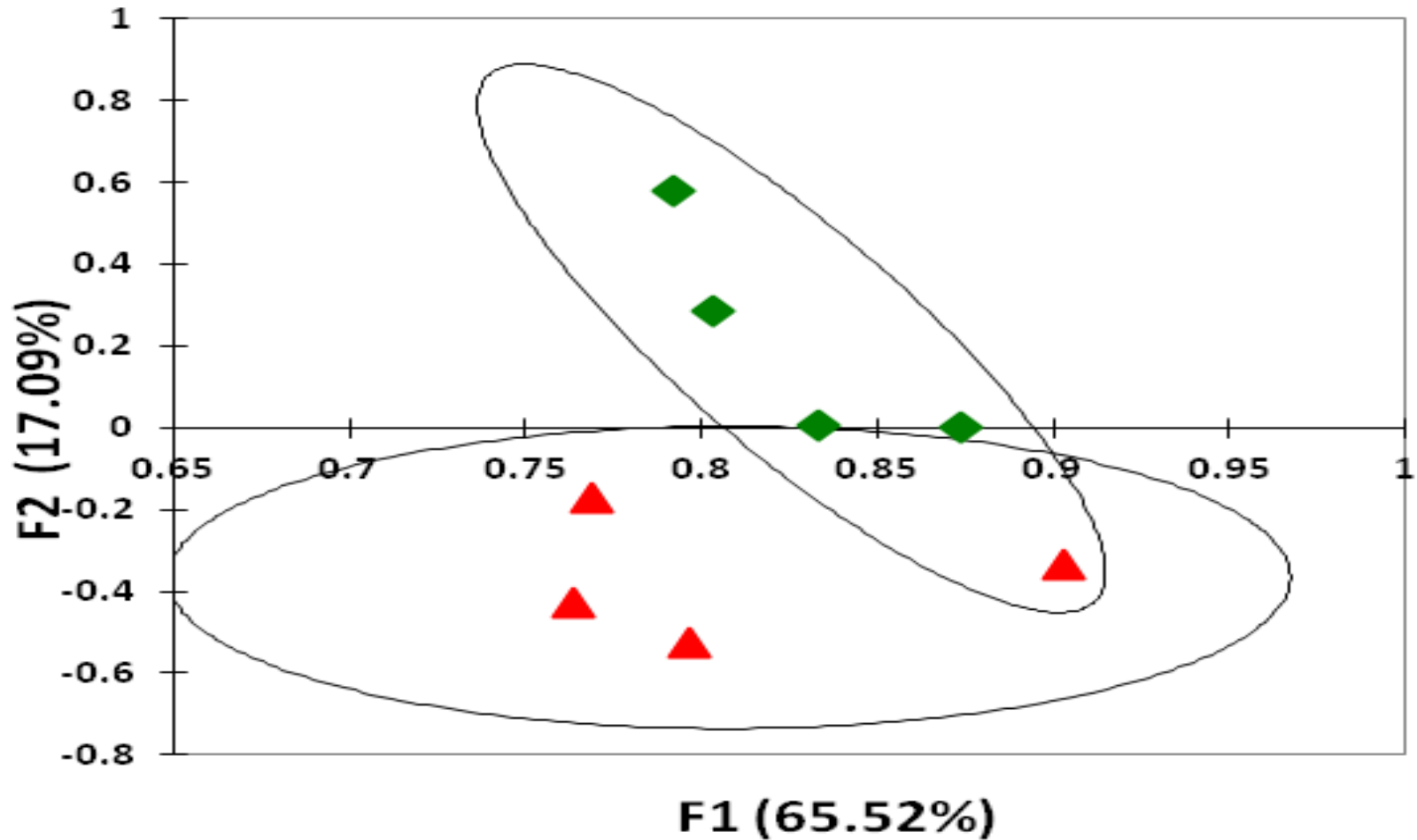
CONVENTIONAL



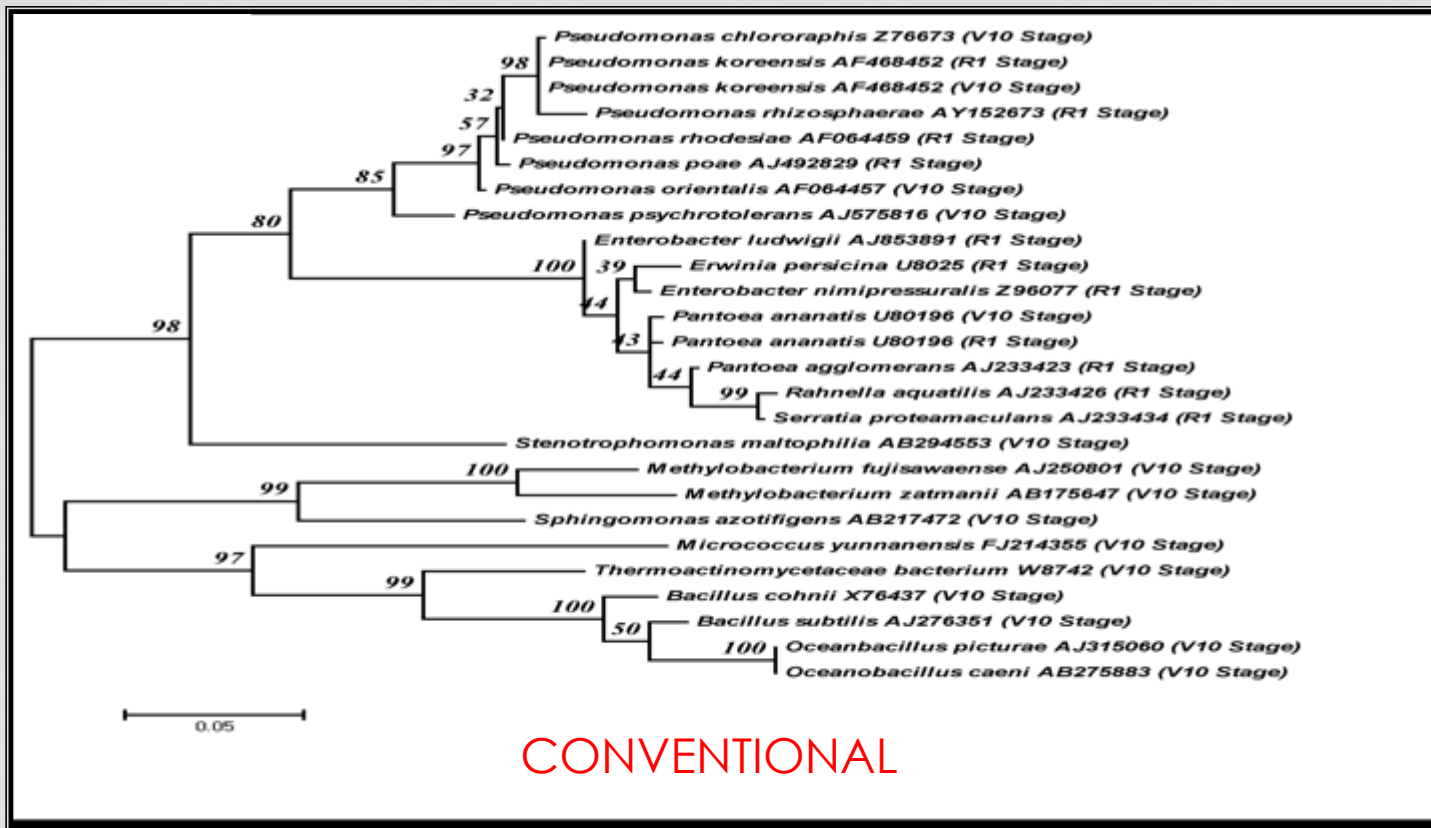
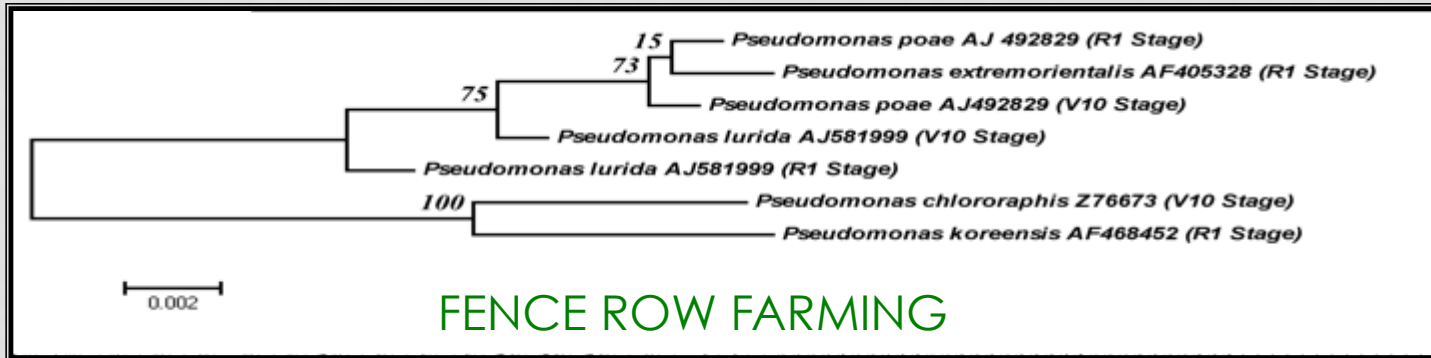


# KANGAROOS

# ZEBRAS



# BACTERIA FAMILY TREES





# NEW PLOUGHS????



# THE SOIL IS LOST





# THE WATER IS BROWN





# BEANS AT 72 BU/AC





# CORN AT 301 BU/AC



# WHAT MAKES IT WORK

- Tile Drainage
- RTK Guidance
- Fence Row Farming
  - Soil Structure
  - Bacteria Colonization
  - Controlled Traffic
  - Banding Fertilizer
  - Natural Fertilizer Production
  - Deep Root Penetration
  - Drought Proofing
  - Drainage
- Twin Rows
- Strip Cropping



# THEY WILL TELL YOU WHAT THEY NEED

